

88-73

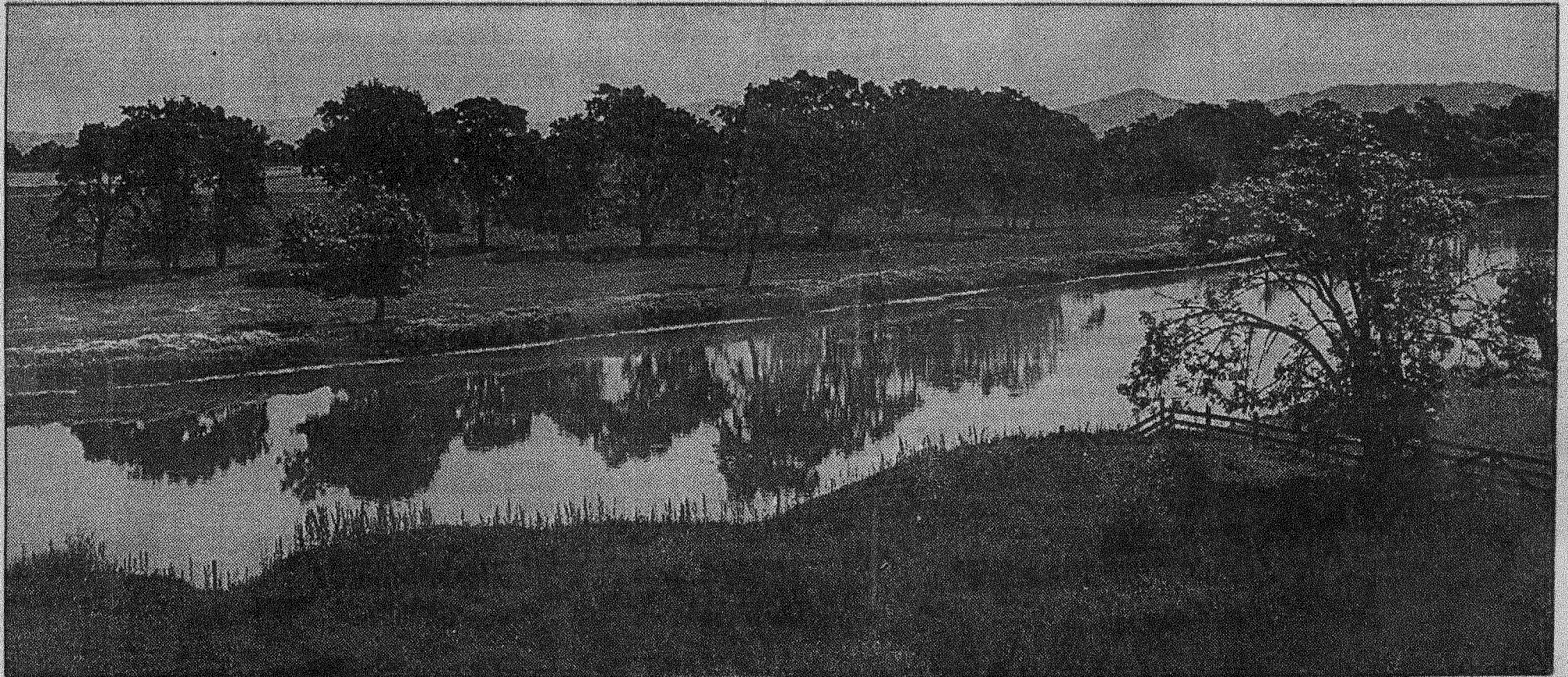
1988 - July 11

☆☆☆ E1

San Francisco Chronicle

OUTDOORS

EVENTS PAGE E4
CYCLING PAGE E2
RECREATION REPORT PAGE E2



PHOTOS BY BRANT WARD/THE CHRONICLE

The Laguna de Santa Rosa, situated in Sonoma County, is one of Northern California's largest freshwater marshes

SECRETS OF A 'HIDDEN' LAGOON